

How to get to IBEC

From El Prat Airport

The L9 (orange) metro line runs to and from the airport to the city every 7 minutes. Get off at the Zona Universitaria stop. (Journey time c.50 mins)

The **Aerobus** (line A1 to/from Terminal 1 or line A2 to/from Terminal 2) runs to and from the airport to the city centre every 10 minutes. It terminates at Pl. Catalunya in the city centre, but you should get off before, at the Pl. Espanya stop. There, take the L3 (green) metro towards Zona Universitaria. Get off at Palau Reial. (Journey time c.50 mins)

Alternatively, a train runs from Airport Terminal 2 to Barcelona Sants Railway station every 30 minutes. (Journey time c.20 mins)

From Barcelona Sants Railway station

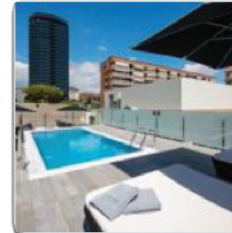
Take the L3 (green) metro towards Zona Universitaria. Get off at Palau Reial. (Journey time c.20 mins)

Meetings are held in IBEC's
Baobab meeting room,
Floor 11,
Torre (Tower) I,
Baldri Reixac 4-8,
08028 Barcelona



Accommodation

The following hotels are conveniently located near IBEC.



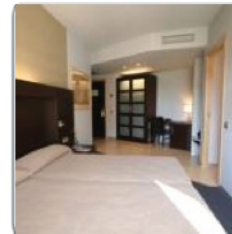
Catalonia Rigoletto ★★★★★

Sabino de Arana, 22–24, Barcelona • [map](#)
 Tel. +34 93 339 19 99
[More information](#)



Senator Barcelona Spa Hotel ★★★★★

Cardenal Reig, 11, Barcelona • [map](#)
 Tel. +34 932 609 900
[More information](#)



Hotel Madanis ★★★★★

Riera Blanca, 10, Barcelona • [map](#)
 Tel. +34 934 470 006
[More information](#)